



# CORIAN<sup>®</sup> EXTERIORS

CORIAN<sup>®</sup>  
EXTERIORS



# FACADES THAT APPEAL TO THE SENSES

FOR MORE THAN A DECADE, CORIAN® EXTERIORS BY DUPONT HAS OFFERED ARCHITECTS AROUND THE GLOBE UNPARALLELED DESIGN FLEXIBILITY.

Corian® Solid Surface is a unique, highly durable and low maintenance material with through-body colour for beautiful, yet functional exterior solutions that can be easily installed as a ventilated rainscreen system. From commercial to residential properties, find your design solution in the trusted and proven performance of Corian® Exteriors.

Benefiting from superior aesthetics combined with extraordinary design flexibility and robust reliability, Corian® Exteriors makes a smart choice for panelised facade systems. Solid, homogeneous and coloured all the way through, Corian® Exteriors consists of custom-made panels capable of creating expansive and sleek vertical surfaces with inconspicuous seams. Inspiring decorative options are also possible, from 3D-textured effects and CNC pattern cutting, to curves, inlays and beautiful lighting effects.



COVER PAGE: Bagnolo Cremasco, Italy: a decorative facade made of Corian® Exteriors panels (created from Corian® Solid Surface Glacier White) for the headquarters of Omnicos company; project and photo by Beppe Riboli Studio, all rights reserved.

ABOVE: Corian® Exteriors panels (made with Corian® Solid Surface Cameo White) for the facade of Villa New Water in Westland, the Netherlands; project and photo by Koen Olthuis – Waterstudio.NL, all rights reserved.

OPPOSITE: The Seeko'o Hotel in Bordeaux by Atelier King Kong Architects marked a worldwide debut - the first structure to have an entire 'skin' made from Corian® Exteriors (based on Corian® Solid Surface Glacier White). Designed to resemble a floating glacier, its striking planes and angles are enhanced by the cool, sleek purity of the cladding. Project by Atelier King Kong Architects; photo by Arthur Pequin, all right reserved.

# FEATURES AND BENEFITS

PROPERTIES OF THE MATERIAL RANGE FROM CREATIVE FLEXIBILITY TO HIGH-PERFORMANCE DURABILITY, EXCELLENT UV AND WEATHER RESISTANCE, EASY MAINTENANCE AND REPAIRABILITY, RELIABLE STRUCTURAL PERFORMANCE AND CERTIFIED FIRE RATING.

A facade in Corian® Solid Surface allows you to express your design concepts through a number of techniques and capabilities, combining the longevity and toughness of a homogeneous sheet material with the proven benefits of a ventilated facade.

Corian® Exteriors makes it possible to produce two- or three-dimensionally formed facade sections as well as shaped sections for corners and lintel elements, therefore creating seamlessly corresponding facade connections. Features such as corners and edges can be either rounded or angled, as desired.

- A naturally resistant surface that is “ready to install”.
- On-site adaptability: Further fabrication and modification is possible in the field by virtue of the material’s compatibility with simple machining methods.
- Durable and robust, panels can usually be repaired, if necessary, rather than replaced, meaning less material is needed, or discarded, over the life of the building.
- Material that maintains its colour: colours run through the entire thickness and cannot wear away or delaminate, making the product inherently robust.
- Available in expansive sheet sizes (up to 1500mm in width)
- Offered in many exterior colours with a 10-year warranty (check [www.exteriors.corian.com](http://www.exteriors.corian.com) for the recommended colours).
- Excellent resistance to weathering (humidity, heat, salt, dirt, sand, pollution and UV light).



ABOVE: Corian® Exteriors panels (made with Corian® Solid Surface Glacier White) for the facade of Menai Science Park in Gaerwen, Wales; project by FaulknerBrowns Architects; photo courtesy of CD (UK) Ltd., all rights reserved.

OPPOSITE: Corian® Exteriors (made with Corian® Solid Surface Glacier White) for the facade of the Municipal offices of the Lacq region in France; project by architect Gilles Bouchez; photo by Arthur Péquin, all right reserved.



# VENTILATED RAINSCREEN DESIGN

FOR EXTERIOR CLADDING APPLICATIONS, CORIAN® EXTERIORS HAS TYPICALLY BEEN INSTALLED AS A VENTILATED RAIN SCREEN FACADE. VENTILATED FACADES ARE DESIGNED TO BREATHE WITH A SPACE BETWEEN THE CLADDING AND THE OUTER WALL – AN IDEAL LOCATION FOR INSULATION MATERIALS.

Corian® Exteriors panels are mechanically fixed to a substructure fixed to the external wall of new or existing (retrofit) buildings. The “breathing” cavity or envelope systems, combined with an effective weather barrier, offer possibilities for high insulation values, with an insulation layer fixed to the external wall, and contribute to a healthy indoor climate.



ABOVE: In a residential area of Zagreb, Croatia, a luxury villa of postmodern style is capturing attention due to its asymmetric shape and its astonishing white cladding made entirely with Corian® Exteriors panels created from Corian® Solid Surface Glacier White. Project by DVA Arhitektka; photo by Marko Jukic, all rights reserved.  
OPPOSITE: For Pritzker Prize-winning architect Richard Meier's first project in China, the world's leading advocate for pure white forms in the built environment opted for Corian® Exteriors (panels made with Corian® Solid Surface Glacier White). Completed in 2012 in Shenzhen, the exterior of the OCT Clubhouse, a members-only dining and fitness centre, used large trapezoidal panels arranged in a graceful grid that appeared set at 90 degrees. OCT Shenzhen Clubhouse, Shenzhen, China. Project by Richard Meier & Partners Architects; photo by Roland Halbe Fotografie, all rights reserved.

Today's advanced ventilated facade systems must accommodate a complex interface of materials and design while meeting some of the most demanding regulations. This entails building elements that provide both structural support and weather resistance, while also making a statement about the overall architectural expression of the building. Combined with standard aluminium support structures, Corian® Exteriors facades are perfectly coordinated in every detail. The result is a robust system for creating safe, thermally efficient, sensually appealing and original solutions. Corian Exteriors feature mechanically attached fixing systems, and must be engineered with sufficient tolerances and flexibility to allow for a variety of differential movements. As Corian®

Exteriors has natural contraction and expansion properties related to changes in temperature, a suitable fixing system must therefore be specified.

**EASY TO WORK WITH, EASY TO INSTALL:**

- Fabrication is undertaken by skilled and approved workshops using hi-tech tools and techniques, and is supplied through a network of Corian® Exteriors Authorized Converters.
- On-site adaptability: Further fabrication and modification is possible in the field by virtue of the material's compatibility with simple machining methods.
- Corian® Solid Surface can offer all the gravitas of the stones but is light-weight, repairable and easy to install.



ABOVE: Corian® Exteriors panels made from Corian® Solid Surface Glacier White for the facade of the Dom Mody Klif shopping mall in Warsaw, Poland; Warszawa"; project Architect: Grupa 5 (investor: PAIGE Investments); photo by Corian® Exteriors, all rights reserved.  
OPPOSITE: The Microsoft Germany headquarters in Munich. The building's exterior is enveloped with Corian® Exteriors panels (made from Corian® Solid Surface Glacier White) which feature a fascinating depth when illuminated by the sun. Project by GSP Architekten Munich; facade by HAGA Metallbau GmbH; photo by Andreas Frisch, GSP Architekten, all rights reserved.



# SUN SHADES AND FINS

CREATE SUN SHADES, ALLOWING ARCHITECTS TO SHAPE AND SCULPT VERTICAL AND HORIZONTAL FINS IN CORIAN® SOLID SURFACE TO REDUCE THE SOLAR HEAT GAIN AND MAXIMISE DAYLIGHT AS WELL AS THE VIEWS FROM INSIDE THE BUILDING.

Exteriors with sun shades in Corian® Solid Surface form an inherently stable material that is highly resistant to weathering and to daily wear and tear. Sun shades made with Corian® Solid Surface offer a long and dependable life.



ABOVE: DuPont Chestnut Run building, Wilmington, Delaware, USA: Corian® Exteriors panels (made with Corian® Solid Surface Glacier White) were used to create sun shades offering a translucent glow during dusk and dawn, and also providing an interesting array of shadows across the building as the sun sweeps by throughout the day; project by AECOM; photo by Corian® Exteriors, all rights reserved.

OPPOSITE: Bagnolo Cremasco, Italy, headquarters of Omnicos company: detail of the decorative facade made of Corian® Exteriors panels (created from Corian® Solid Surface Glacier White). Project and photo by Beppe Riboli Studio, all rights reserved.





# CREATIVE PROJECTS

TRANSFORMING DESIGN IDEAS AND INSPIRATION INTO INNOVATIVE FUNCTIONAL AND BEAUTIFUL FACADES. CORIAN® EXTERIORS ENABLES MONOLITHIC DESIGN, UNIQUE PATTERNS AND LIGHTING EFFECTS UNCOMMON IN STANDARD FACADE MATERIALS.

Corian® Exteriors brings personality to virtually any type of environment, enhancing and facilitating the lives of those who use and enjoy its unique potential.



ABOVE: Corian® Exteriors panels (made with Corian® Solid Surface Deep Nocturne) for the Afrykarium building at the Wrocław zoo, Wrocław, Poland; project and photo by Arc2 Fabryka Projektowa, all rights reserved.

OPPOSITE: London, UK: the Motel One building in the historic Minorities neighbourhood features an illuminated facade made with Corian® Exteriors (using Corian® Solid Surface Glacier White). Project by Mackay + Partners; photo Nick Kane, courtesy of Mackay + Partners, all rights reserved.

Corian® Exteriors allows creativity to shine through, with degrees of translucent diffusion, depending on colour choice, thicknesses achieved via engraving and aggregate texture. This quality enables a range of luminous effects, both striking and ethereal, and enhances the individual identity of each facade project.

It is also possible to play with the light by exploiting the form and pattern cutting flexibility of Corian® Solid Surface to achieve different effects with shape, space and shadow and with the dappling effects of sunlight, which will alter the appearance of the material, and its chosen colour, by its movement through the day.












Furthermore, in response to the increasing ingenuity in structural lighting designs, the groundbreaking Corian® Illumination Series of colours has been designed specifically to offer enhanced translucency. These refined translucent tones subtly alter depending on the level of direct illumination, adding a delicate beauty to the renowned strength of Corian® Solid Surface.



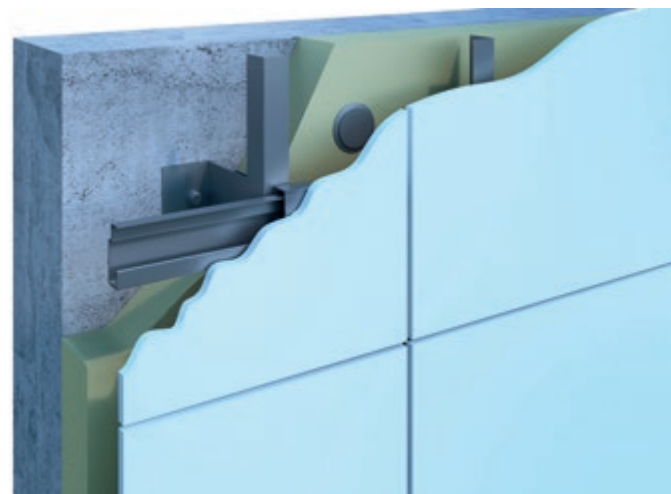
ABOVE (Starting from top): The Sheik Aziz mosque in Sehla, Bahrain, featuring a decorative cladding made with Corian® Exteriors panels made with Corian® Solid Surface (Glacier White and Dusk colours); design Sheik Mohsin Al Asfoori; photo courtesy of Jaffaria Waqf. Corian® Exteriors panels (created from Corian® Solid Surface Glacier White) for a family home in Barcelona, Spain; project by Estudio A-cero; photo by A-cero/Marcos Domingo, all rights reserved. OPPOSITE: Corian® Exteriors panels (created from Corian® Solid Surface Glacier White) for the facade of the OVO Wroclaw centre in Wroclaw, Poland; project by Gottesman-Szmelcman Architecture; photo by Kamil Czaja, all rights reserved.



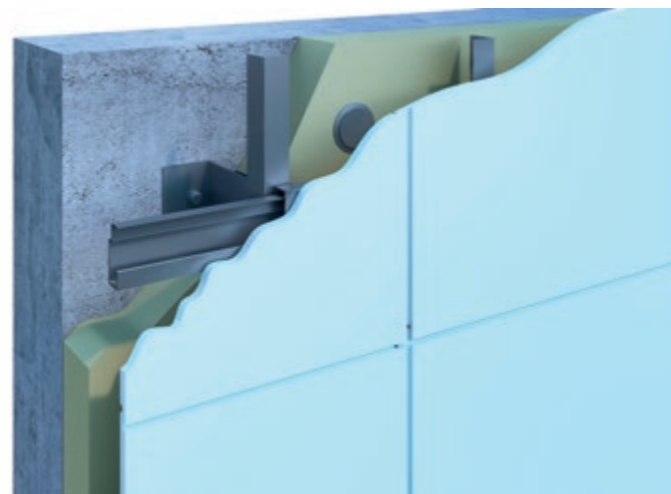
# TECHNICAL PROPERTIES OF CORIAN® EXTERIORS

-  **Panels produced in sizes up to 5'x12'** (760mm/930mm/1300mm/1500mm).
-  **Overlap details to hide panel joints.**
-  **Colour-through core.**
-  **Thermal expansion and contraction allowance 1/32"/FT, (3mm/m).**
-  **Weight 4.4lb/FT<sup>2</sup> (21.3 kg/m<sup>2</sup>).**
-  **Impact, scratch and graffiti resistant.**
-  **Chemical resistance, including salt spray.**
-  **UV stable colour options, less than 5ΔE over 10 years - (Delta E, dE).**  
\*Delta E is a metric for understanding how the human eye perceives colour difference.
-  **Non-Porous, will not support the growth of microbial.**
-  **Various Regional Certifications** refer to website [www.exteriors.corian.com](http://www.exteriors.corian.com)
-  **Fire Classifications:**  
ASTM E-84, Class A, Euroclass B-s1,d0, BS 476 Part 6 and 7, IS12777, LEPiR II, n° EFR-18-LP-004390.

Open Joint

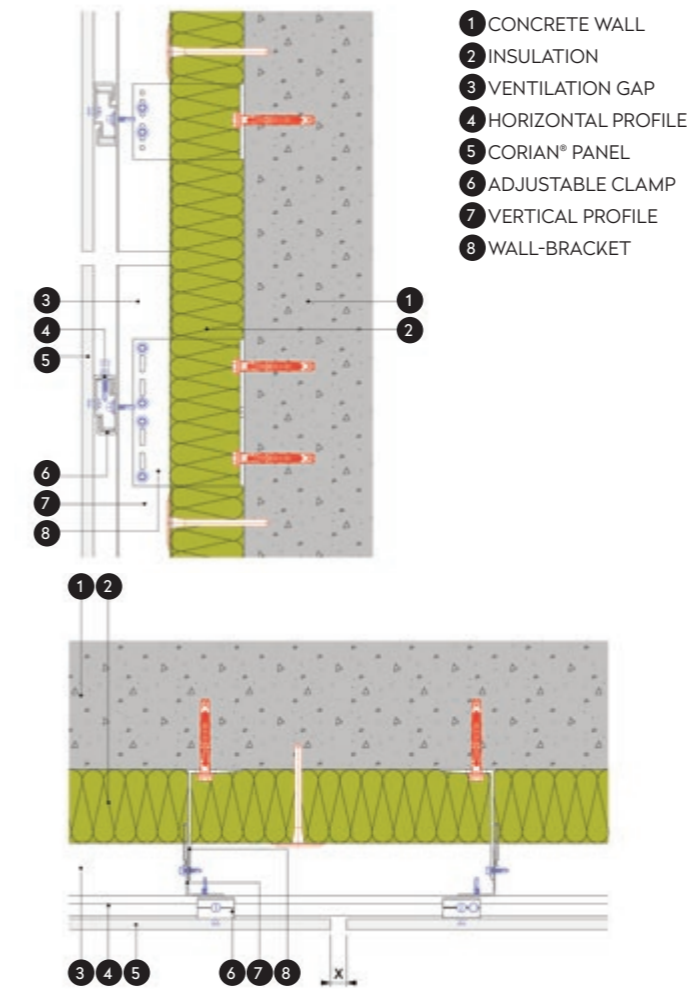


Overlap Joint

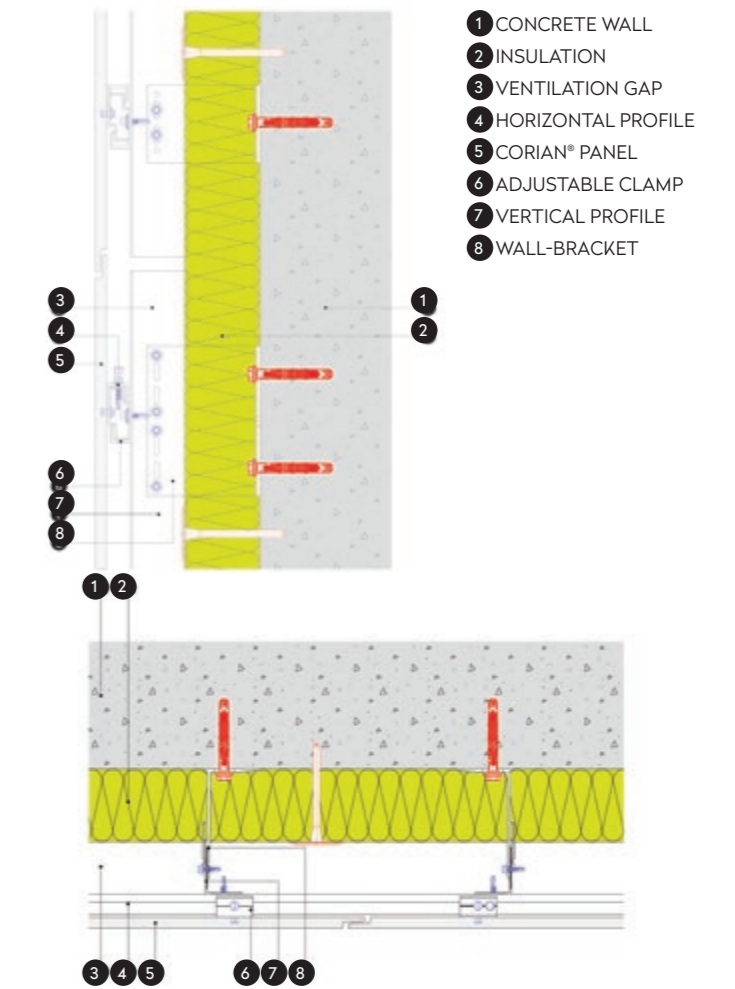


## RAINSCREEN ATTACHMENT DESIGN

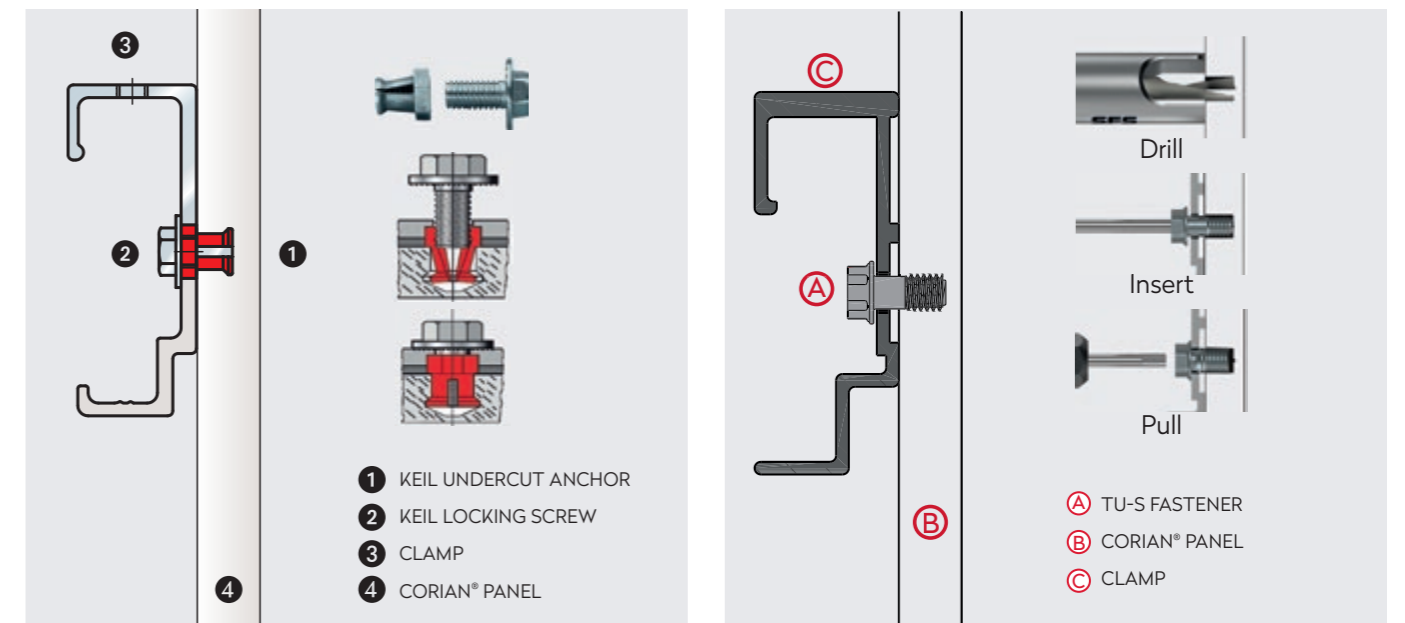
Open Joint



Overlap Joint



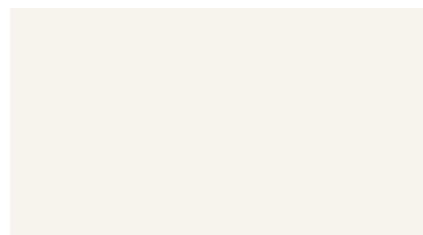
## RAINSCREEN FASTENERS



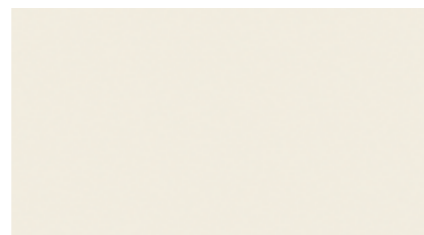
# CORIAN® EXTERIORS COLOUR PALETTE



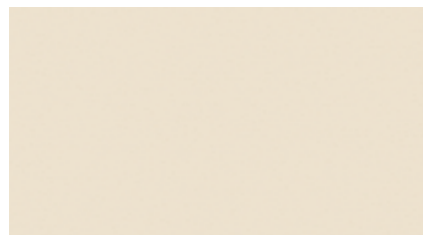
DESIGNER WHITE



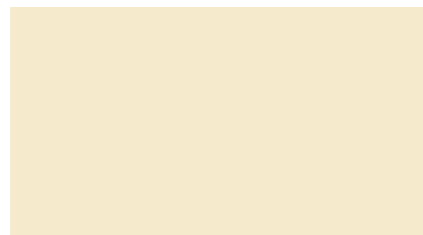
GLACIER WHITE



CAMEO WHITE



BISQUE



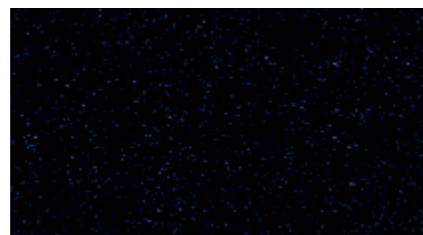
VANILLA



DEEP TITANIUM



DEEP NOCTURNE



DEEP ANTHRACITE



DEEP NIGHT SKY

Printed representation of colours may vary from actual samples. Please view actual sample before purchasing.

For more information on the colours and sheet sizes offered for Corian® Exteriors, please visit: [www.exteriors.corian.com](http://www.exteriors.corian.com)




DuPont de Nemours, Inc (DuPont) is a solid surface and quartz surfaces manufacturer that inspires creative design. DuPont is not in the business of architecture, engineering, or performing installations. This information corresponds to our current knowledge on the subject. The images (photos and/or computer generated images) included in this publication intend to be simply a source of inspiration in terms of style, trends, colours, colour combinations. It is offered solely to provide possible suggestions for your own determinations. It is not intended, however, to substitute for any testing you may need to conduct to determine for yourself the suitability of our products for your particular purposes. This information may be subject to revision as new knowledge and experience becomes available. DuPont makes no warranties and conditions of any kind and assumes no liability whatsoever in connection with any use of this information. Nothing in this publication is to be considered as a licence to operate under or a recommendation to infringe any patent, trademark or copyright.

DuPont™, Corian®, the Corian® Exteriors logo, the Corian® Design logo and Make Your Space™ are registered trademarks or trademarks or copyrighted material of affiliates of DuPont de Nemours, Inc. Copyright © 2020 of affiliates of DuPont de Nemours, Inc., all rights reserved.



THIS PAGE: Palais des Congrès in Abidjan, Ivory Coast: Corian® Exteriors panels (created from Corian® Solid Surface Glacier White) for the facade. Project by architect Pierre Fakhoury; photo by Corian® Exteriors, all rights reserved.

BACK COVER: The Shift building in Paris, France, featuring a facade made of Corian® Exteriors panels based on Corian® Solid Surface Glacier White; project by Axel Schoenert Architectes; photo courtesy of Axel Schoenert Architectes, all rights reserved.

To know more about Corian® Exteriors and Corian® Design: [exteriors.corian.com](http://exteriors.corian.com) [coriandesign.com](http://coriandesign.com) [corian.com](http://corian.com)  
 [LinkedIn.com/company/coriant-design](https://www.linkedin.com/company/coriant-design)  [Facebook.com/CorianDesign](https://www.facebook.com/CorianDesign)  [Instagram.com/CorianDesign](https://www.instagram.com/CorianDesign)

  
**CORIAN**<sup>®</sup>  
DESIGN  


Make Your Space™